

## Overview: Ecological Communities of PKOLS (Mount Douglas)

**Note:** The ecological communities outlined in this document are based on the classification system that was in place at the time of the Sensitive Ecosystem Mapping Inventory Project (1993-1997) which surveyed the entire boundaries of PKOLS (Mount Douglas Park). Definitions of Garry oak ecological communities have since undergone expansions and revisions (Erickson, W.R. and D.V. Meidinger, 2007). Additionally, the District of Saanich has acquired land to expand the boundaries of PKOLS (Mount Douglas Park), extending beyond the scope of the initial mapping carried out by the Sensitive Ecosystem Mapping Inventory Project. Up-to-date surveys within the revised boundaries of the park that incorporate the latest ecological definitions would significantly benefit ongoing conservation and restoration initiatives.

ID	Scientific Name	English Name	Provincial	BC List	Global
8633	<a href="#">Pseudotsuga menziesii / Mahonia nervosa</a>	Douglas-fir / Dull Oregon-grape	S1 (2018)	Red	G2
1721	<a href="#">Pseudotsuga menziesii - Arbutus menziesii</a>	Douglas-fir - Arbutus	S2 (2021)	Red	GNR
1590	<a href="#">Thuja plicata / Achlys triphylla</a>	Western redcedar / Vanilla-leaf	S1 (2013)	Red	G1
1584	<a href="#">Thuja plicata / Oemleria cerasiformis</a>	Western redcedar / Osoberry	S1 (2006)	Red	G1
3155	<a href="#">Quercus garryana / Holodiscus discolor</a>	Garry oak / Oceanspray	S1 (2004)	Red	G1
5845	<a href="#">Quercus garryana / Bromus carinatus</a>	Garry oak / California brome	S1 (2022)	Red	G1
1596	<a href="#">Alnus rubra / Carex obnupta [Populus trichocarpa]</a>	Red alder / Slough sedge [Black cottonwood]	S2 (2022)	Red	G1

### B.C. List Status

Species (including subspecies, varieties and populations) and ecological communities are assigned to provincial lists depending on their Provincial Conservation Status (see table below). The lists are as follows:

**Red:** Includes any native species or ecological communities that have, or are candidates for, Extirpated, Endangered, or Threatened status in British Columbia. Extirpated species no longer exist in the wild in British Columbia, but do occur elsewhere. Endangered species and ecological communities are facing imminent extirpation or extinction. Threatened species and ecological communities are likely to become endangered if limiting factors are not reversed. Not all Red-listed species or ecological communities will necessarily become formally designated. Placing species or ecological communities on these lists flags them as being at risk and requiring investigation.

**Blue:** Includes any native species or ecological community considered to be of Special Concern (formerly Vulnerable) in British Columbia. Species or ecological communities of Special Concern have characteristics that make them particularly sensitive or vulnerable to human activities or natural events. Blue-listed species or ecological communities are at risk, but are not Extirpated, Endangered or Threatened.

**Yellow:** Includes species or ecological communities that are apparently secure and not at risk of extinction. Yellow-listed species may have red- or blue-listed subspecies.

**Unknown:** Includes species or ecological communities for which the Provincial Conservation Status is unknown due to extreme uncertainty (e.g., S1S4). It will also be 'Unknown' if it is uncertain whether the entity is native (Red, Blue or Yellow), introduced (Exotic) or accidental in B.C. This designation highlights species and ecological communities where more inventory and/or data gathering is needed.

### Provincial Conservation Status

Provincial Status applies to a species' or ecological community's conservation status in British Columbia. The number in parenthesis is the year the status rank was last reviewed. The status ranks have the following meaning:

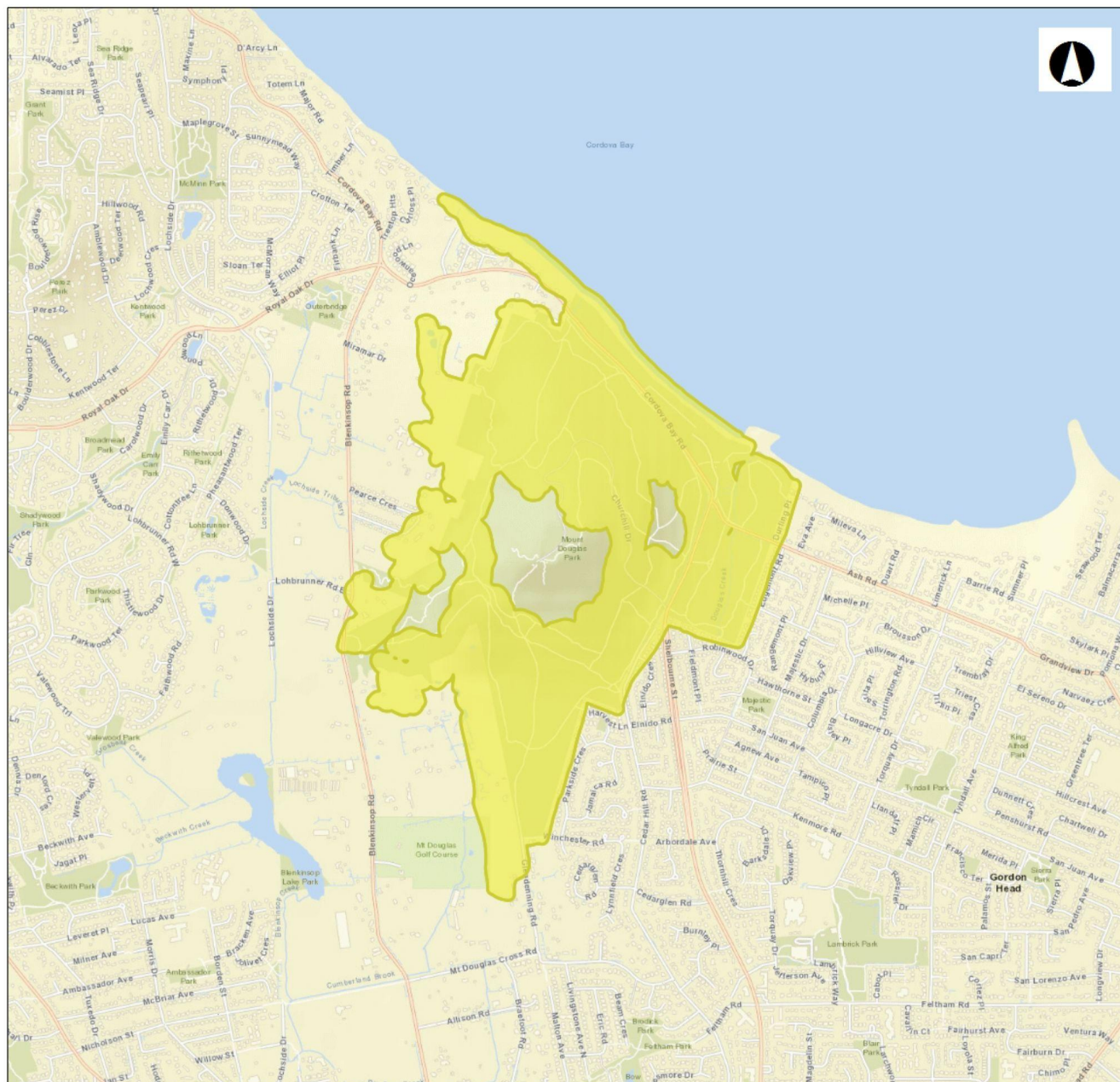
- SX = presumed extirpated
- SH = historical (species)/possibly extirpated (communities)
- **S1 = critically imperiled**
- **S2 = imperiled**
- S3 = special concern, vulnerable to extirpation or extinction
- S4 = apparently secure
- S5 = demonstrably widespread, abundant, and secure.
- NA = not applicable
- NR = unranked
- SU = unrankable

### Global Conservation Status

A Global Rank applies to a species/ecological community across its entire range. The number in parenthesis is the year the rank was last reviewed. The ranks have the following meaning:

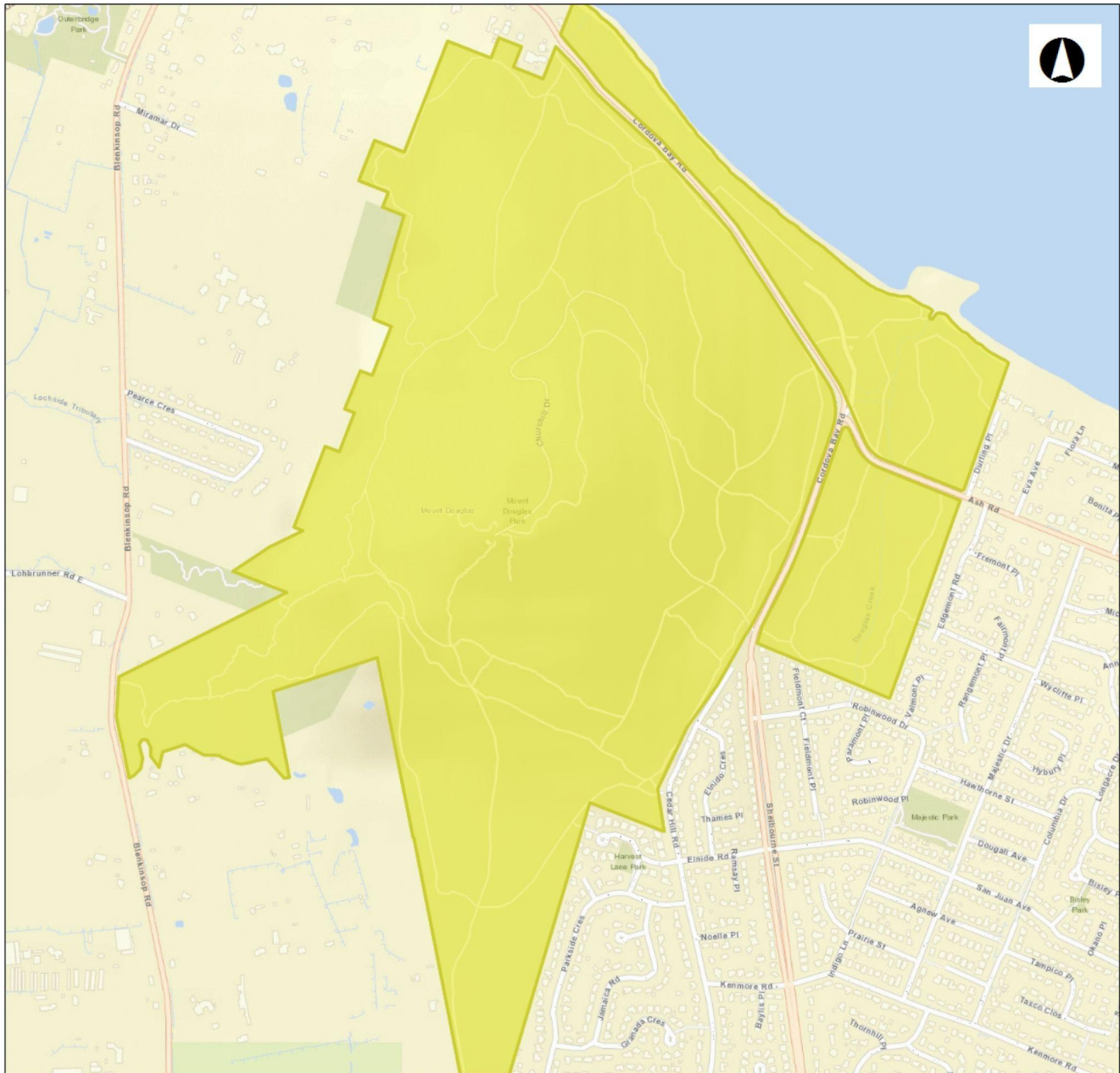
- GX = presumed extinct (species)/eliminated (community)
- GH = possibly extinct (species)/presumed eliminated (comm.)
- **G1 = critically imperiled**
- **G2 = imperiled**
- G3 = vulnerable to extirpation or extinction
- G4 = apparently secure
- G5 = demonstrably widespread, abundant, and secure.
- NA = not applicable
- NR = unranked - Global Rank not yet assessed.
- GU = unrankable

## The Douglas-fir / dull Oregon-grape Ecological Community in PKOLS (Mount Douglas)



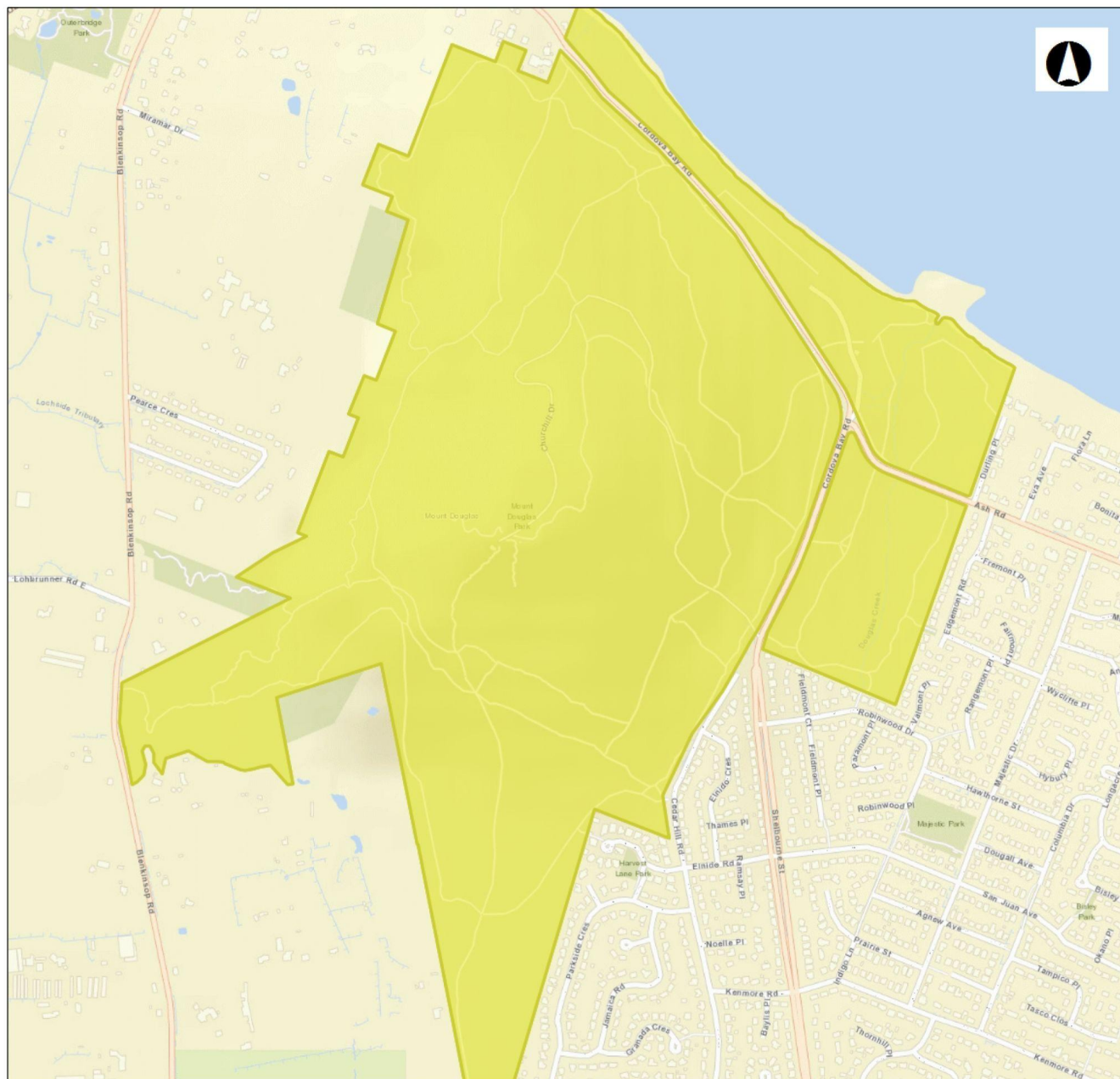
ID	Scientific Name	English Name	Provincial	BC List	Global
8633	<a href="#"><i>Pseudotsuga menziesii</i> / <i>Mahonia nervosa</i></a>	Douglas-fir / Dull Oregon-grape	S1 (2018)	Red	G2
1721	<a href="#"><i>Pseudotsuga menziesii</i> - <i>Arbutus menziesii</i></a>	Douglas-fir - Arbutus	S2 (2021)	Red	GNR
1590	<a href="#"><i>Thuja plicata</i> / <i>Achlys triphylla</i></a>	Western redcedar / Vanilla-leaf	S1 (2013)	Red	G1
1584	<a href="#"><i>Thuja plicata</i> / <i>Oemleria cerasiformis</i></a>	Western redcedar / Osoberry	S1 (2006)	Red	G1
3155	<a href="#"><i>Quercus garryana</i> / <i>Holodiscus discolor</i></a>	Garry oak / Oceanspray	S1 (2004)	Red	G1
5845	<a href="#"><i>Quercus garryana</i> / <i>Bromus carinatus</i></a>	Garry oak / California brome	S1 (2022)	Red	G1
1596	<a href="#"><i>Alnus rubra</i> / <i>Carex obnupta</i> [<i>Populus trichocarpa</i>]</a>	Red alder / Slough sedge [Black cottonwood]	S2 (2022)	Red	G1

## The Douglas-fir - arbutus Ecological Community in PKOLS (Mount Douglas)



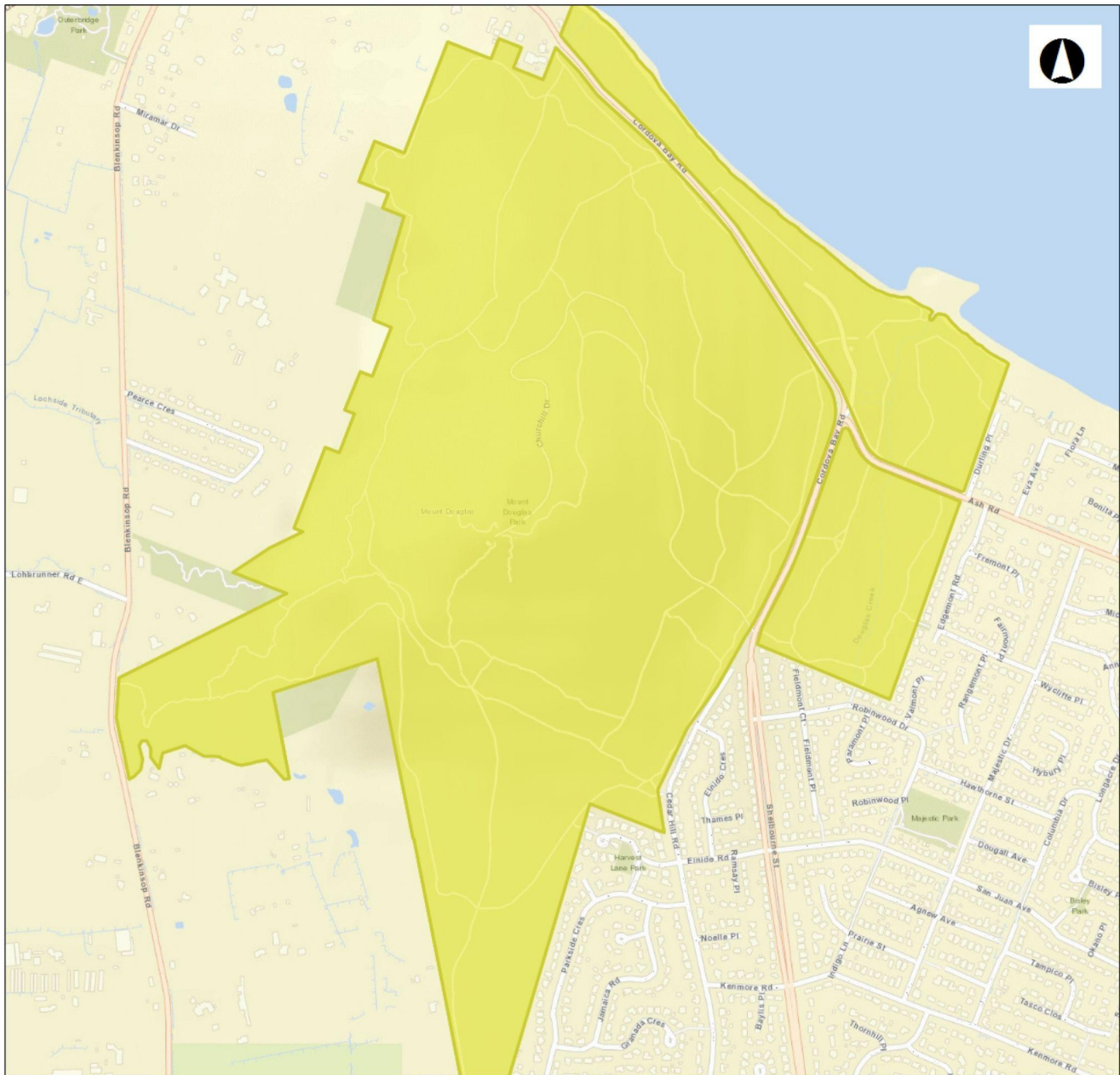
ID	Scientific Name	English Name	Provincial	BC List	Global
8633	<a href="#"><i>Pseudotsuga menziesii</i> / <i>Mahonia nervosa</i></a>	Douglas-fir / Dull Oregon-grape	S1 (2018)	Red	G2
1721	<a href="#"><i>Pseudotsuga menziesii</i> - <i>Arbutus menziesii</i></a>	Douglas-fir - Arbutus	S2 (2021)	Red	GNR
1590	<a href="#"><i>Thuja plicata</i> / <i>Achlys triphylla</i></a>	Western redcedar / Vanilla-leaf	S1 (2013)	Red	G1
1584	<a href="#"><i>Thuja plicata</i> / <i>Oemleria cerasiformis</i></a>	Western redcedar / Osoberry	S1 (2006)	Red	G1
3155	<a href="#"><i>Quercus garryana</i> / <i>Holodiscus discolor</i></a>	Garry oak / Oceanspray	S1 (2004)	Red	G1
5845	<a href="#"><i>Quercus garryana</i> / <i>Bromus carinatus</i></a>	Garry oak / California brome	S1 (2022)	Red	G1
1596	<a href="#"><i>Alnus rubra</i> / <i>Carex obnupta</i> [<i>Populus trichocarpa</i>]</a>	Red alder / Slough sedge [Black cottonwood]	S2 (2022)	Red	G1

## The Western redcedar / Vanilla-leaf Ecological Community in PKOLS (Mount Douglas)



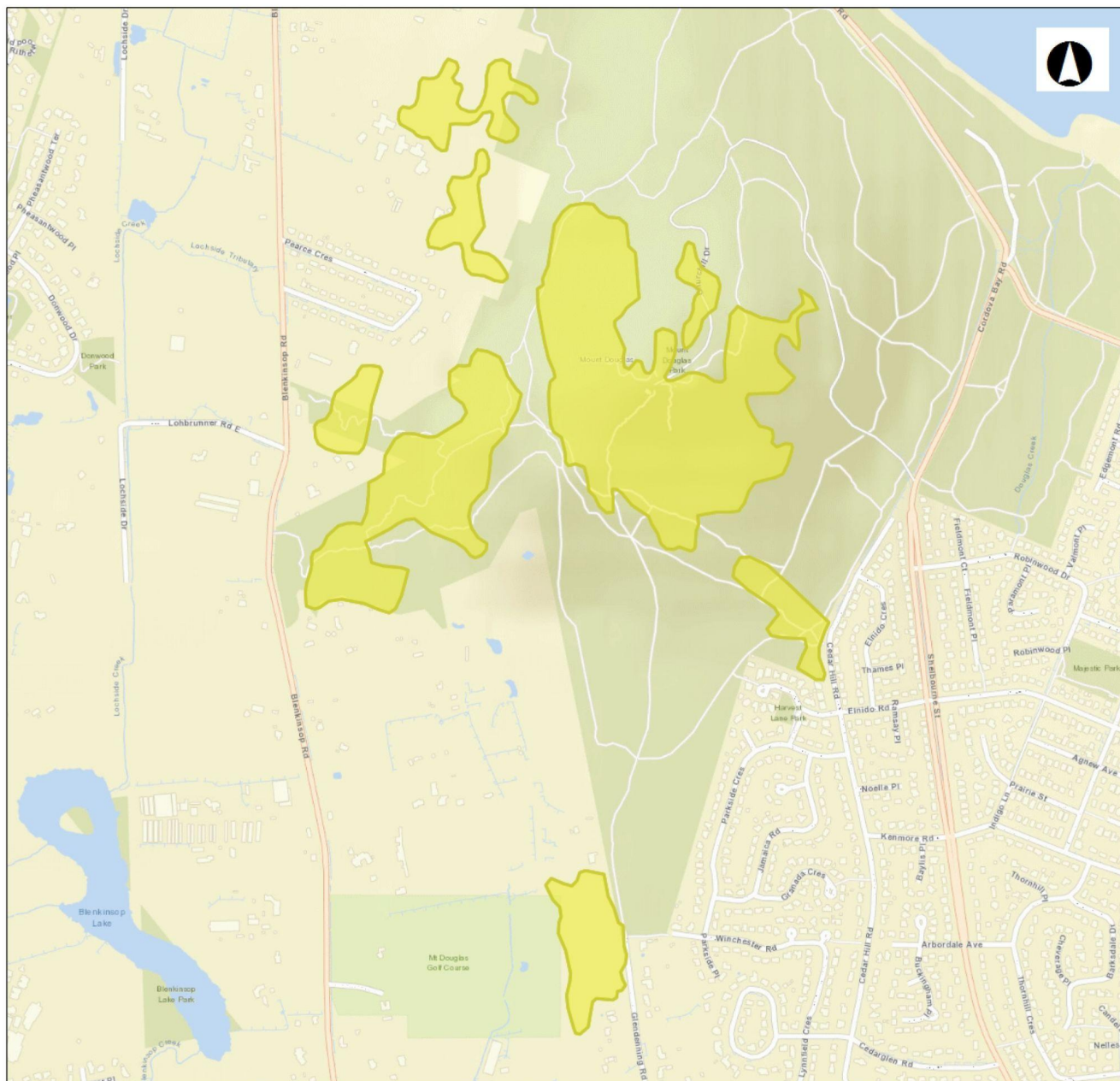
ID	Scientific Name	English Name	Provincial	BC List	Global
8633	<a href="#"><i>Pseudotsuga menziesii</i> / <i>Mahonia nervosa</i></a>	Douglas-fir / Dull Oregon-grape	S1 (2018)	Red	G2
1721	<a href="#"><i>Pseudotsuga menziesii</i> - <i>Arbutus menziesii</i></a>	Douglas-fir - Arbutus	S2 (2021)	Red	GNR
1590	<a href="#"><i>Thuja plicata</i> / <i>Achlys triphylla</i></a>	Western redcedar / Vanilla-leaf	S1 (2013)	Red	G1
1584	<a href="#"><i>Thuja plicata</i> / <i>Oemleria cerasiformis</i></a>	Western redcedar / Osoberry	S1 (2006)	Red	G1
3155	<a href="#"><i>Quercus garryana</i> / <i>Holodiscus discolor</i></a>	Garry oak / Oceanspray	S1 (2004)	Red	G1
5845	<a href="#"><i>Quercus garryana</i> / <i>Bromus carinatus</i></a>	Garry oak / California brome	S1 (2022)	Red	G1
1596	<a href="#"><i>Alnus rubra</i> / <i>Carex obnupta</i> [<i>Populus trichocarpa</i>]</a>	Red alder / Slough sedge [Black cottonwood]	S2 (2022)	Red	G1

## The Western redcedar / Osoberry Ecological Community in PKOLS (Mount Douglas)



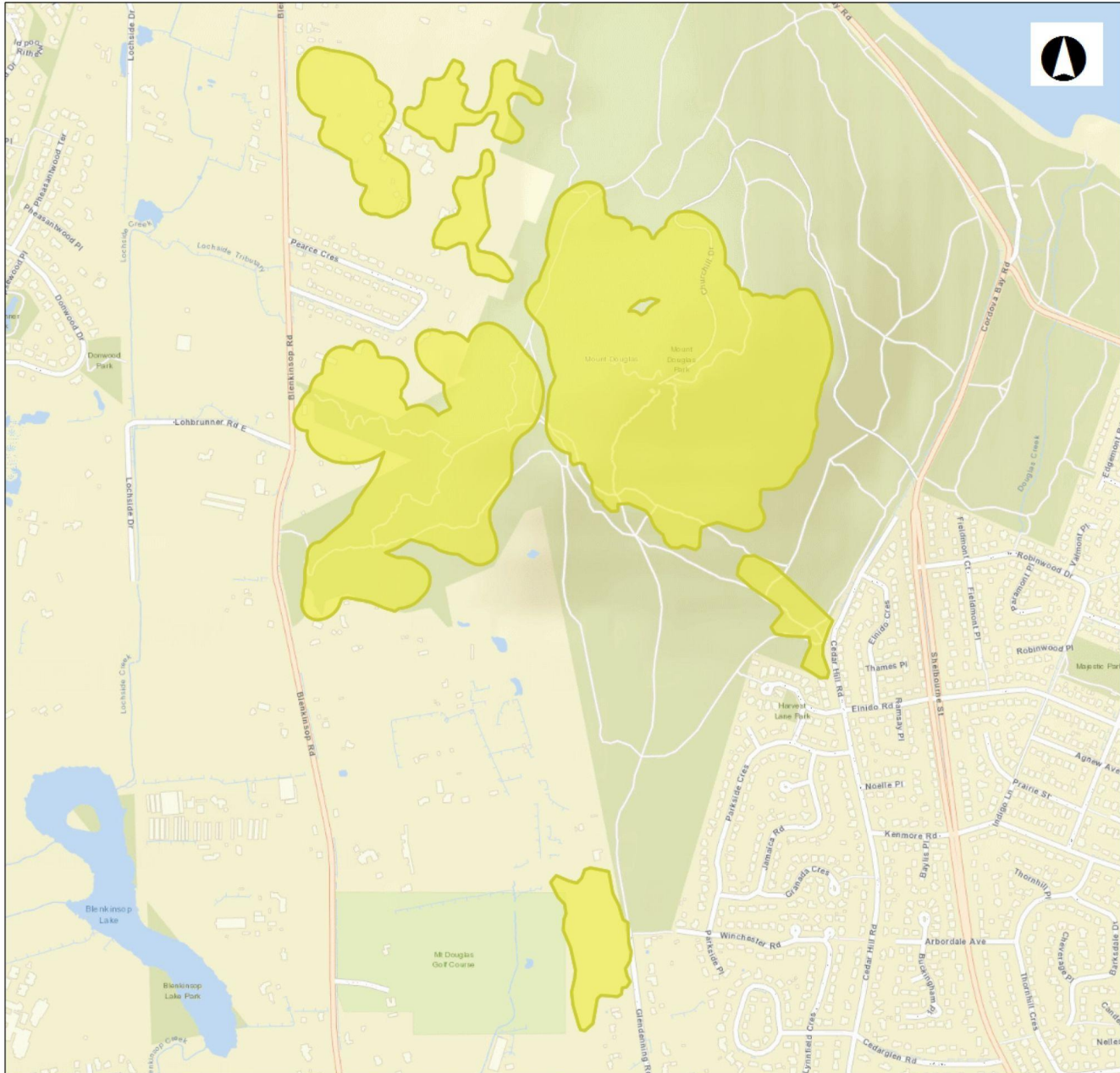
ID	Scientific Name	English Name	Provincial	BC List	Global
8633	<a href="#">Pseudotsuga menziesii / Mahonia nervosa</a>	Douglas-fir / Dull Oregon-grape	S1 (2018)	Red	G2
1721	<a href="#">Pseudotsuga menziesii - Arbutus menziesii</a>	Douglas-fir - Arbutus	S2 (2021)	Red	GNR
1590	<a href="#">Thuja plicata / Achlys triphylla</a>	Western redcedar / Vanilla-leaf	S1 (2013)	Red	G1
1584	<a href="#">Thuja plicata / Oemleria cerasiformis</a>	Western redcedar / Osoberry	S1 (2006)	Red	G1
3155	<a href="#">Quercus garryana / Holodiscus discolor</a>	Garry oak / Oceanspray	S1 (2004)	Red	G1
5845	<a href="#">Quercus garryana / Bromus carinatus</a>	Garry oak / California brome	S1 (2022)	Red	G1
1596	<a href="#">Alnus rubra / Carex obnupta [Populus trichocarpa]</a>	Red alder / Slough sedge [Black cottonwood]	S2 (2022)	Red	G1

## The Garry oak / Oceanspray Ecological Community in PKOLS (Mount Douglas)



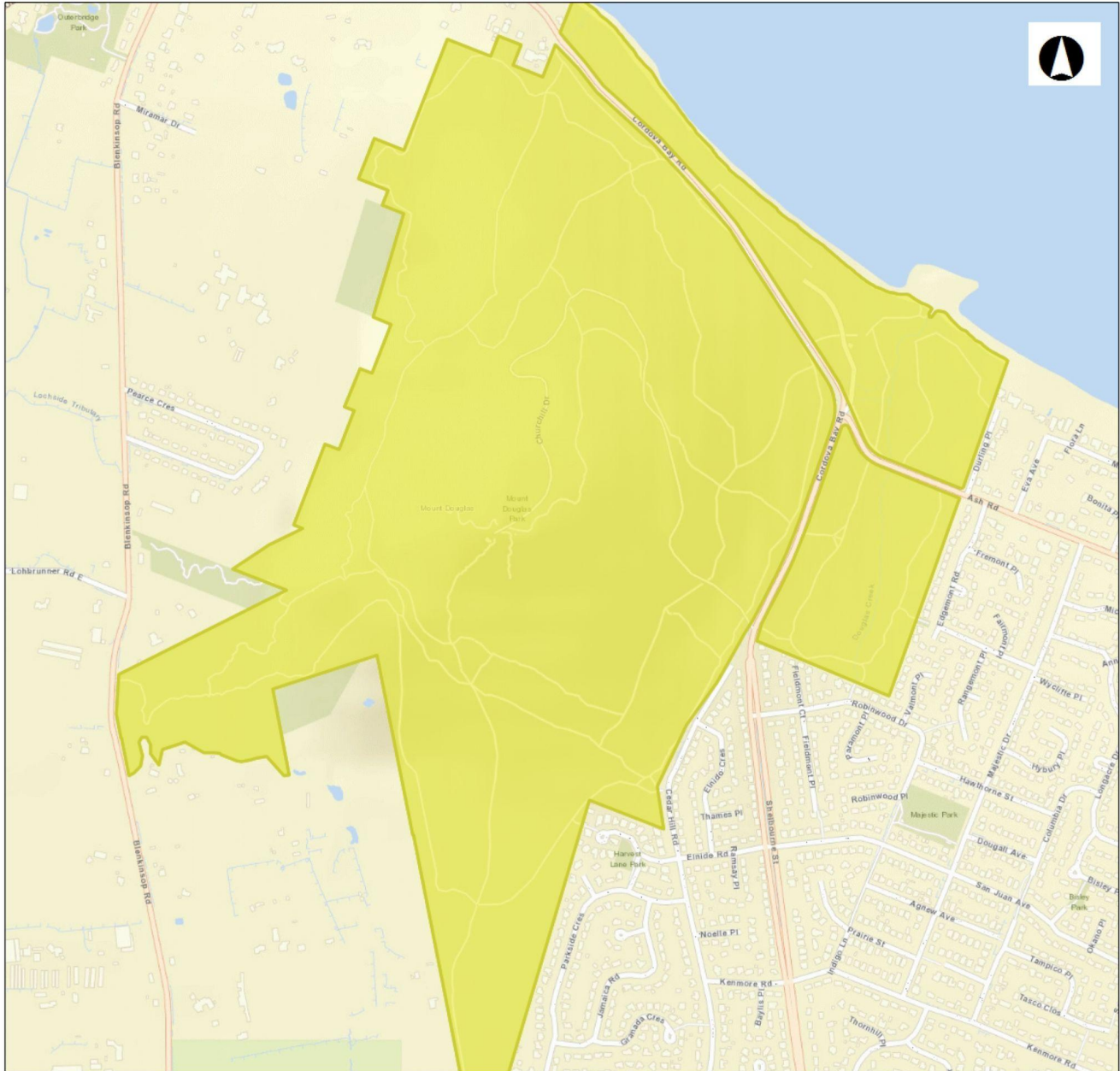
ID	Scientific Name	English Name	Provincial	BC List	Global
8633	<a href="#">Pseudotsuga menziesii / Mahonia nervosa</a>	Douglas-fir / Dull Oregon-grape	S1 (2018)	Red	G2
1721	<a href="#">Pseudotsuga menziesii - Arbutus menziesii</a>	Douglas-fir - Arbutus	S2 (2021)	Red	GNR
1590	<a href="#">Thuja plicata / Achlys triphylla</a>	Western redcedar / Vanilla-leaf	S1 (2013)	Red	G1
1584	<a href="#">Thuja plicata / Oemleria cerasiformis</a>	Western redcedar / Osoberry	S1 (2006)	Red	G1
3155	<a href="#">Quercus garryana / Holodiscus discolor</a>	Garry oak / Oceanspray	S1 (2004)	Red	G1
5845	<a href="#">Quercus garryana / Bromus carinatus</a>	Garry oak / California brome	S1 (2022)	Red	G1
1596	<a href="#">Alnus rubra / Carex obnupta [Populus trichocarpa]</a>	Red alder / Slough sedge [Black cottonwood]	S2 (2022)	Red	G1

## The Garry oak / California brome Ecological Community in PKOLS (Mount Douglas)



ID	Scientific Name	English Name	Provincial	BC List	Global
8633	<a href="#"><i>Pseudotsuga menziesii</i> / <i>Mahonia nervosa</i></a>	Douglas-fir / Dull Oregon-grape	S1 (2018)	Red	G2
1721	<a href="#"><i>Pseudotsuga menziesii</i> - <i>Arbutus menziesii</i></a>	Douglas-fir - Arbutus	S2 (2021)	Red	GNR
1590	<a href="#"><i>Thuja plicata</i> / <i>Achlys triphylla</i></a>	Western redcedar / Vanilla-leaf	S1 (2013)	Red	G1
1584	<a href="#"><i>Thuja plicata</i> / <i>Oemleria cerasiformis</i></a>	Western redcedar / Osoberry	S1 (2006)	Red	G1
3155	<a href="#"><i>Quercus garryana</i> / <i>Holodiscus discolor</i></a>	Garry oak / Oceanspray	S1 (2004)	Red	G1
5845	<a href="#"><i>Quercus garryana</i> / <i>Bromus carinatus</i></a>	Garry oak / California brome	S1 (2022)	Red	G1
1596	<a href="#"><i>Alnus rubra</i> / <i>Carex obnupta</i> [<i>Populus trichocarpa</i>]</a>	Red alder / Slough sedge [Black cottonwood]	S2 (2022)	Red	G1

## The Red alder / Slough sedge Ecological Community in PKOLS (Mount Douglas)



ID	Scientific Name	English Name	Provincial	BC List	Global
8633	<a href="#">Pseudotsuga menziesii</a> / <a href="#">Mahonia nervosa</a>	Douglas-fir / Dull Oregon-grape	S1 (2018)	Red	G2
1721	<a href="#">Pseudotsuga menziesii</a> - <a href="#">Arbutus menziesii</a>	Douglas-fir - Arbutus	S2 (2021)	Red	GNR
1590	<a href="#">Thuja plicata</a> / <a href="#">Achlys triphylla</a>	Western redcedar / Vanilla-leaf	S1 (2013)	Red	G1
1584	<a href="#">Thuja plicata</a> / <a href="#">Oemleria cerasiformis</a>	Western redcedar / Osoberry	S1 (2006)	Red	G1
3155	<a href="#">Quercus garryana</a> / <a href="#">Holodiscus discolor</a>	Garry oak / Oceanspray	S1 (2004)	Red	G1
5845	<a href="#">Quercus garryana</a> / <a href="#">Bromus carinatus</a>	Garry oak / California brome	S1 (2022)	Red	G1
1596	<a href="#">Alnus rubra</a> / <a href="#">Carex obnupta</a> [ <a href="#">Populus trichocarpa</a> ]	Red alder / Slough sedge [Black cottonwood]	S2 (2022)	Red	G1



The following plant summaries provide an overview of common plant species associated with each ecological community but may not reflect a comprehensive list of all species known to be present, historically or presently, in PKOLS (Mount Douglas):

8633: <i>Pseudotsuga menziesii</i> / <i>Mahonia nervosa</i> (Douglas-fir / dull Oregon-grape)			
Trees	Shrubs	Herbs and Forbs	Moss
Douglas-fir Grand fir <b>Western redcedar</b> Bigleaf maple Red alder Arbutus Shore pine Western flowering dogwood	Dull Oregon-grape Salal Ocean spray Baldhip rose Western trumpet honeysuckle Red huckleberry Common snowberry Trailing snowberry	Trailing blackberry Broad-leaved starflower Sword fern Vanilla leaf Bracken fern	Oregon beaked-moss Electrified cats-tail moss Step moss

1721: <i>Pseudotsuga menziesii</i> - <i>Arbutus menziesii</i> (Douglas-fir - arbutus)			
Trees	Shrubs	Herbs and Forbs	Moss
Douglas-fir Arbutus Lodgepole pine Garry oak	Ocean-spray Dull Oregon-grape Snowberry Tall Oregon-grape Bald-hip rose Saskatoon Trailing blackberry Salal Hairy honeysuckle Western trumpet honeysuckle	Western fescue Alaska oniongrass Blue wildrye California brome Columbia brome Dryland sedge Many-flowered wood-rush <b>Tall trisetum</b> Pacific sanicle Big-leaved sandwort Purple peavine White fawn lily Broad-leaved starflower Bracken fern Purple sweet-cicely Rattlesnake-plantain Woodland strawberry Twinflower Sea blush White hawkweed Scouler's harebell Pathfinder Fairy-slipper Broad-leaved shooting star Great camas Menzies larkspur <b>White-top aster</b> Satinflower Small-flowered fringe-cup Alaska rein-orchid <b>Howell's triteleia</b> Cleavers Western trillium	Electrified cat's-tail moss Step moss Broom moss Grey rock-moss Wallace's selaginella Menzies' tree-moss Oregon beaked-moss Slender beaked-moss

1590: <i>Thuja plicata</i> / <i>Achlys triphylla</i> (Western redcedar / vanilla-leaf)			
Trees	Shrubs	Herbs and Forbs	Moss
<b>Western redcedar</b> Bigleaf maple	Dull Oregon-grape Salal	Sword fern Three-leaved foamflower	Oregon beaked moss Palm tree moss

Grand fir Douglas-fir Western flowering dogwood Cascara	Baldhip rose	Vanilla leaf	Common feather-moss Leafy mosses
--	--------------	--------------	-------------------------------------

**1584: *Thuja plicata* / *Oemleria cerasiformis* (Western redcedar / Osoberry)**

Trees	Shrubs	Herbs and Forbs	Moss
<b>Western redcedar</b> Bigleaf maple Grand fir Red alder	Osoberry Trailing blackberry Common snowberry Wild gooseberry	Sword fern Three-leaved foamflower Western trillium Fringecup	Common feather-moss Coastal leafy moss

**3155: *Quercus garryana* / *Holodiscus discolor* (Garry oak / Oceanspray)**

Trees	Shrubs	Herbs and Forbs	Moss
Garry oak Douglas-fir Arbutus Grand fir Western yew Cascara	Oceanspray Snowberry Saskatoon Tall Oregon-grape Salal Baldhip rose Hairy honeysuckle Western trumpet honeysuckle	Blue wildrye Alaska oniongrass California brome Fescues Long-stoloned sedge Many flowered woodrush Pacific sanicle Miner's-lettuce Big-leaved sandwort White fawn lily Great & common camas Broad-leaved shooting star Menzies larkspur Sea blush Chocolate lily Satinflower <b>Deltoid balsamroot</b> <b>White-top aster</b>	Wallace's selaginella Broom moss Grey rock-moss Electrified cat's-tail moss Step moss Oregon beaked-moss

**5845: *Quercus garryana* / *Bromus carinatus* (Garry oak / California brome)**

Trees	Shrubs	Herbs and Forbs	Moss
Garry oak Douglas-fir Arbutus Bigleaf maple	Snowberry	California brome Blue wildrye Many-flowered wood-rush Long-stoloned sedge Small-flowered blue-eyed Mary Cleavers Pacific sanicle White fawn lily Yarrow White triteleia Spring gold Tower mustard Great & common camas Menzies' larkspur Meadow death camas Field chickweed Miner's-lettuce Sea blush	Slender beaked moss Broom moss Grey rock-moss

		Broad-leaved stonecrop Small-flowered nemophila Miner's lettuce Alaska rein-orchid Chickweed monkeyflower Western buttercup Chocolate lily Satinflower Broad-leaved shooting star Small-flowered fringe cup Hooker's onion Wallace's selaginella <b>Deltoid balsamroot</b> <b>Golden paintbrush</b> White-top aster	
--	--	---	--

**1596: *Alnus rubra* / *Carex obnupta* [*Populus trichocarpa*] (Red alder / Slough sedge [Black cottonwood])**

Trees	Shrubs	Herbs and Forbs	Moss
Red alder Black cottonwood <b>Western redcedar</b>	Common snowberry Red-osier dogwood Pacific crabapple Black twinberry Trailing blackberry	Slough sedge Sword fern False lily-of-the-valley	<i>N/A (Poorly developed)</i>