



## PKOLS (Mount Douglas Park) Telecommunications Tower Replacement Project

### FAQS:

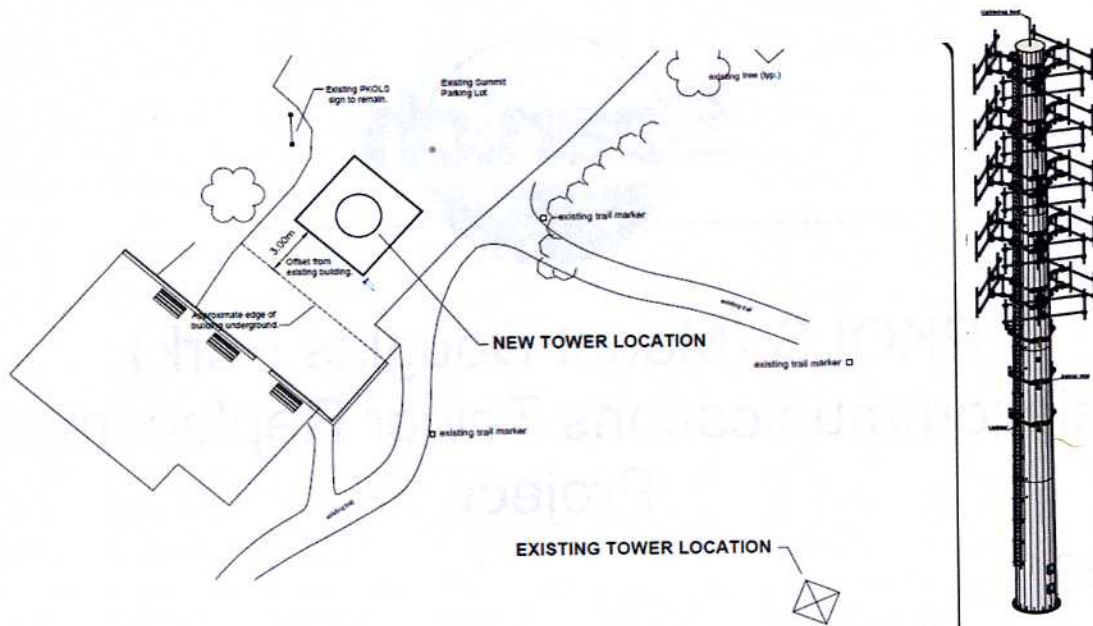
A telecommunications tower at PKOLS (Mount Douglas Park) has been in place since the 1970s and is an integral component of the community public emergency network within Saanich.

#### 1. Why is the tower being upgraded?

- The current tower is 20+ years of age and fatigued under new Canadian Standards Association guidelines. There is additional concern based on increasing wind magnitudes experienced and predicted.
- Tenants are requiring larger equipment to maintain adequate levels of service.

#### 2. Where is the new tower being built and what will it look like.

- The foundation of the tower will be underground. The monopole tower will be 40m in height with a 2m whip antenna at the top. The first of three microwave antennas will start 13.5m from the base and the first of five antenna pinwheel arms will start 22.5m from the base. There is a locked anti-climb ladder included in the design starting at 3.2m from the base.
- The approximate location will be in the Churchill Drive summit parking lot as shown below:



### 3. Why is the new tower being relocated from the old tower location?

- Building beside the current tower location indicated conflicts with trees, ecosystems, construction safety, project scope, and cost. Through consultations inside and outside the organization, a number of alternate locations within the currently zoned area were considered and the new location was determined to have the least environmental impacts, while meeting construction safety, and project scope considerations.

### 4. What is the anticipated schedule for the Project?

- November to January, 2023: Geotechnical and Structural Engineering reports to be received
- February, 2024: Foundation installation
- March, 2024: Monopole installation
- April, 2024: Installation of Ducting and Final Cleanup

### 5. What are the benefits of this new tower?

- Compliance with new CSA guidelines
- Ability of service providers to provide services based on changing technology.
- Revenues contribute to enhancements in PKOLS (Mount Douglas Park) such as Douglas Creek restoration, new trails and bridge over Douglas Creek, and many environmental restoration projects.

### 6. What will happen to the current tower?

- We are anticipating removing the current Tower by the end of 2024 once tenants have been transitioned to the new tower.
- The current tower will remain until the new tower is operational.

For further information regarding telecommunication towers please visit Innovation, Science and Economic Development Canada:

<https://www.canada.ca/en/services/business/permits/federallyregulatedindustrysectors/broadcastingtelecommunicationsregulation.html>